



**Project funded by:**



Humanitarian Aid Department of the European  
Commission (ECHO)



Oxfam-GB

**In Coordination With:**  
**Palestinian Water Authority (PWA)**

**Water and Sanitation, Hygiene (WaSH)**  
**Monitoring Program**  
Impact of the Current Crisis in the West Bank and Gaza Strip  
**Survey Report # 34**  
August 2006

*For more information, please call:*

**Eng. Basema Bashir/ PHG**

**Tel. 02/2966315 or 02/2966316**

**E-mail: [bashir@phg.org](mailto:bashir@phg.org)**

**Website: <http://www.phg.org/campaign>**

## Introduction

This is the ninth report prepared by the WaSH Monitoring Program during this phase. The previously distributed reports included information about 322 communities in total. The current report includes information about 98 communities that were surveyed during the past several weeks ( July and August 2006).

In this report, collected data and information, as was done in the previous reports, are presented in different tables where each table reflects at least one of the major problems affecting the WaSH situation in these communities. This report includes summary of the information for communities surveyed during the past month; the total number of these communities is 98. The tables include summary of the collected data and major findings and comments on these tables are also provided.

### **Table 1: Surveyed Communities**

This table includes communities that were surveyed during the past two weeks. Basic data of these communities is also presented in this table.

### **Table 2: Major WaSH situation indicators in the surveyed communities.**

Data presented in this table was recently added to the used questionnaires. It includes major important indicators that reflect difficulties and major problems affecting these communities.

These indicators are as follows:

1. **Households with year-round access to improved water source (%) and Households with year-round access to unimproved water source (%):** Where **Improved water source** means Household connection, Public standpipe, Borehole, Protected dug well, protected spring, and **unimproved water sources** include: Unprotected well, unprotected spring, Vendor-provided water (Tanker truck water).
2. **Water supplied per capita per day (liter):** estimated quantity of water supplied per each person per day.
3. **Wastewater Network Coverage (%):** percentage of households connected to wastewater network.
4. **Connection to Cesspits or Septic Tank (%):** percentage of households connected to cesspits or septic tanks.
5. **Availability of Solid waste Collection System (%):** percentage of coverage of the wastewater collection system.
6. **Population Suffer from Water Born Diseases (%):** percentage of population affected by water related diseases.
7. **Water Supply Facilities Operated and Maintained by community (%):** percentage of the water supply facilities operated and maintained by the local council in the community.
8. **Cost Recovery for Water Supply Services (%):** percentage of financial coverage of the water supply services provided by the local council; this is reflected in collection of cost of water supply through payment of water bills by the households.
9. **Unaccounted for Water within Water Supply System (%):** percentage of quantity of water lost before reaching the consumer.
10. **Monthly Household Income Spent on Water Supply (%):** estimated percentage from the household income spent on water supply.
11. **Monthly Household Income Spent on Sanitation (%):** estimated percentage from the household income spent on sanitation services, including cost of wastewater vacuum tankers.
12. **Major Community Problems and Needs:** summarizes major current problems and needs of the community according to the local council.

### **Table 3: Relative change in tankers water price**

This table presents the estimated price of one cubic meter transported through tankers in New Israeli Shekels (NIS), which is about US\$ 0.22. Price paid per cubic meter now (i.e. during the current crisis) and price paid before the current Intifada are presented; relative percentage of change in the price of one cubic meter is estimated in the table.

### **Table 4: Effects of fixed checkpoints on communities**

In this table, name as well as weight of effect (where 2 is for high effect, i.e. complete block of the road; 1 is for intermediate effect, i.e. delays for several hours) of the fixed checkpoints are presented. Effects on tankers water supply, on maintenance team access, and on Public Health Centers (PHC) access are evaluated and presented in the table.

### **Table 5: Effects of mobile checkpoints, earth mounds, curfew, and the Wall on communities.**

Effects of mobile/ flying checkpoints, earth mounds, curfew, and the Wall on surveyed communities are presented, where and as was presented for the fixed checkpoints: 2 is for high effect, i.e. complete block of the road; 1 is for intermediate effect, i.e. delays for several hours.

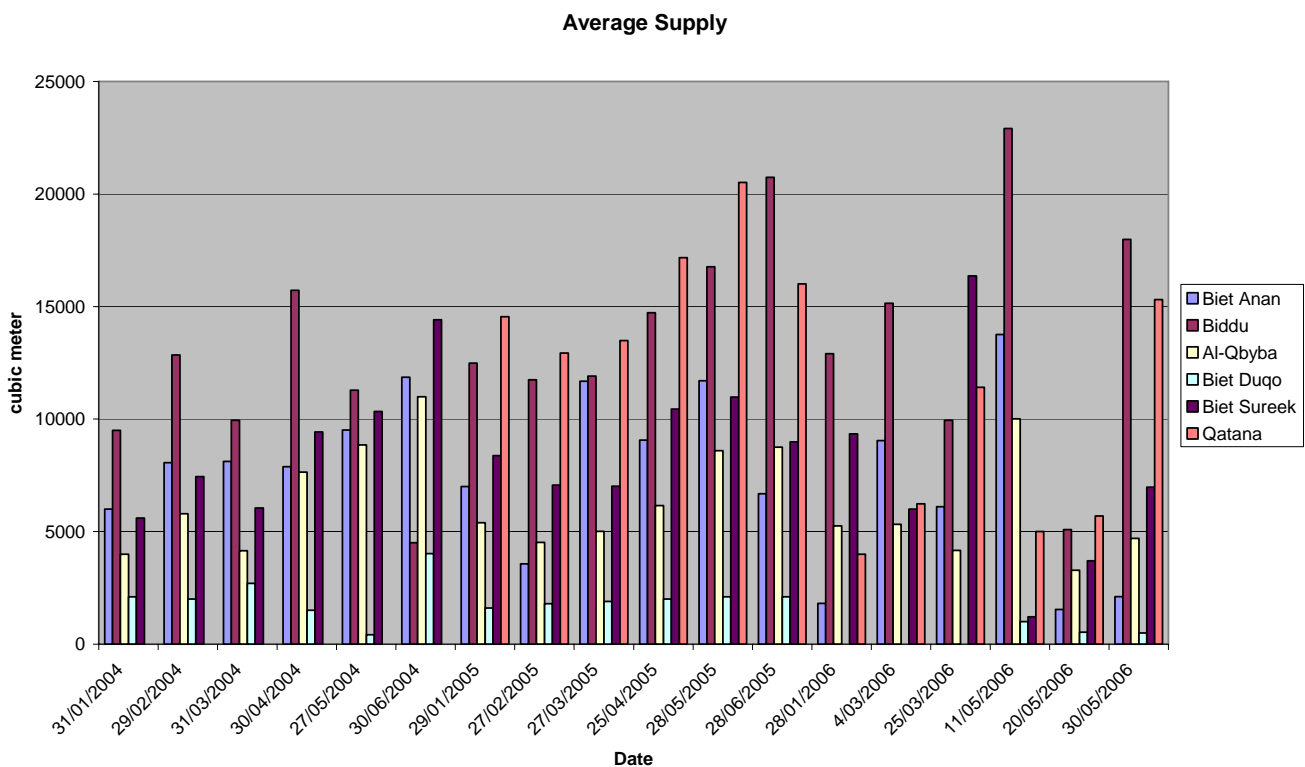
Specific and urgent needs of some of the Palestinian communities:

- 1. Gaza Strip:** The Humanitarian crisis in the Gaza Strip is getting worse every day. People are still in bad need of food, water and other basic needs, and destruction of the infrastructure is going on daily basis. The closure of all entrances to the Strip in addition complete siege policy imposed on it are making the situation even worse and are limiting provision of support by local and international organizations to the Palestinian communities. Electricity problem and shortage of fuel are still one of the major problems that are threatening the complete cut off of water supply to many Palestinian communities. Environmental and health crisis started also to affect every community in the Strip including dumped solid waste on the street sides. The Gaza Strip, in addition to the other parts of the Palestinian area, is in bad need of support of the International community.
- 2. Qaryut / Nablus Governorate (population of 2669 person):** On August 24<sup>th</sup> 2006, the Israeli Occupation force closed completely the southern entrance of the community with earth mounds and very large rocks. This directly prohibited people living in this community from reaching Ramallah city which supports the community with basic services and needs. At the same time, the closure of this road prohibited people from reaching the main source of water which is a local spring, to get the needed water quantity for domestic use. The Israeli occupation forces also caused damages to the spring and nearby reservoirs used to store water coming from this local spring.
- 3. Acute water shortage in north Jerusalem communities:** During the past several weeks and until the time of preparation of this report, the northern Jerusalem

communities which include Biet Anan, Biddu, Qatana, Biet Sureek, Al-Qbyba and Biet Duqo, have been suffering from acute water shortage for domestic use. Total population of these communities is about 28,000 people. This shortage in the water supply was as a direct result of reduction in the supplied quantity by the Israel Mekorot Company which is considered the main source of water supply for these communities and the Jerusalem area. The shortage in water supply caused and is still causing agony and great suffering for residents of these communities.

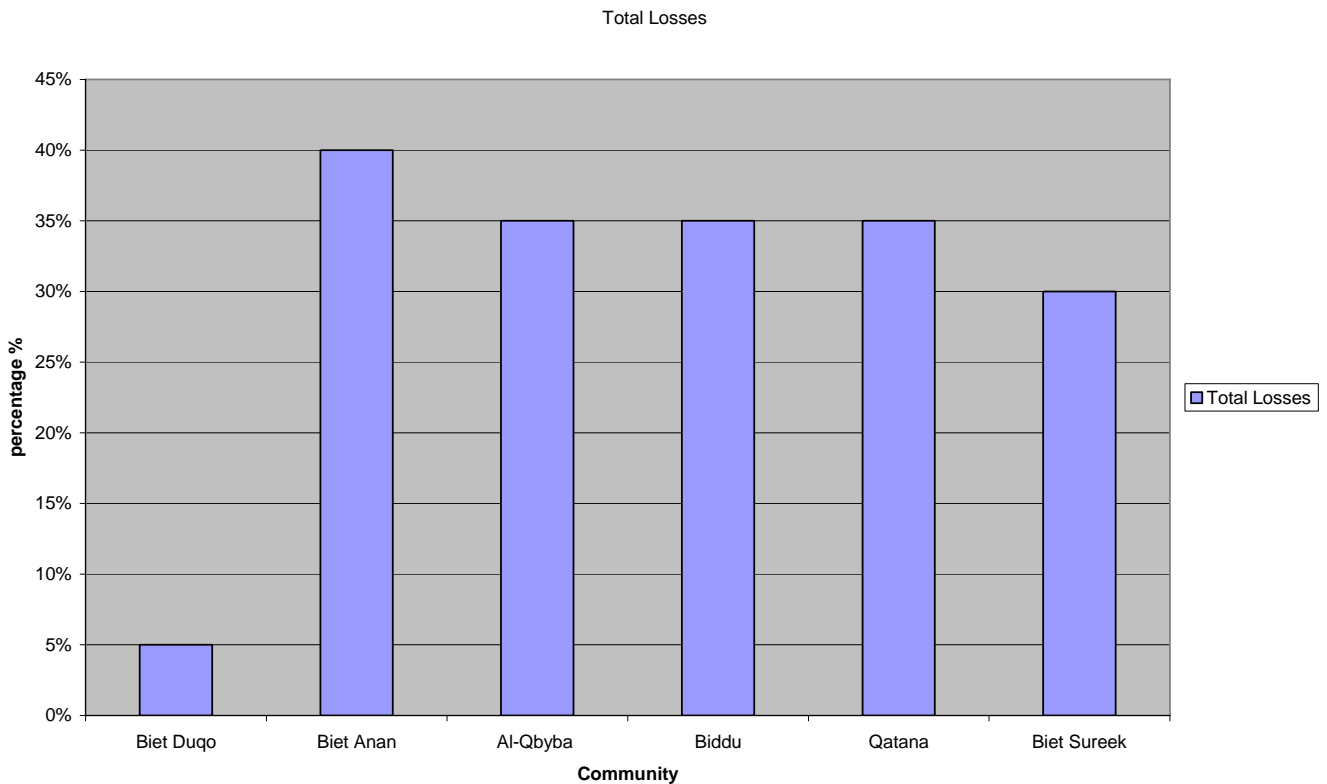
The WaSH-MP team visited these communities on August 5<sup>th</sup> 2006 and met with their local councils and visited and talked also to some of the families in these communities. It was concluded that most of the families in these communities are forced to rely on water brought through tankers with prices much higher than water coming through the network (about 21 NIS/ m<sup>3</sup> compared to about 4 NIS m<sup>3</sup> through water network). On the other hand, some of the families that are not able to buy water through tankers are using water from available neglected agricultural cisterns, which means that people's health and hygiene is directly threatened and affected. It was confirmed by the local councils of these communities that the Israeli Mekorot Company deliberately reduced the supplied quantity to less than half the normal quantity (about 50 m<sup>3</sup>/h). This was through the complete control of the water valves available in the nearby Israeli settlement Har Adar, which is very close to Biddu and Beit 'Anan communities.

The following graph confirms reduction in supply during the past period.



Note: abnormal levels are due to estimated readings by the West Bank Water Department (WBWD).

Current supply of water to these communities is barely enough for one third of its population. Since most of the households are located on high areas, it is very difficult for water to reach it with the available low pressure taking in to consideration also that most of these water networks are very old and in bad need of rehabilitation; it has a relatively high percentage in water losses as show in the following graph.



Residents of these communities are demanding the human right organizations and the international community to support them by putting more pressure on the Israeli authorities and the Mekorot Company to give back the normal supply quantities to these communities to end this shortage in water supply, and on the contrary the quantities of water should be increased taking in to considerations the normal increase of population and living standards.

**Table 1: Surveyed Communities**

| No. | Community ID | Community Name      | Governorate | Population 2006 | Survey Date |
|-----|--------------|---------------------|-------------|-----------------|-------------|
| 1   | 151265       | Osarin              | Nablus      | 1762            | 15/6/2006   |
| 2   | 151200       | Yanun               | Nablus      | 166             | 15/6/2006   |
| 3   | 151270       | Aqraba              | Nablus      | 8573            | 15/6/2006   |
| 4   | 151345       | Jurish              | Nablus      | 1496            | 15/6/2006   |
| 5   | 151435       | 'Ammuriya           | Nablus      | 338             | 15/6/2006   |
| 6   | 151410       | Qaryut              | Nablus      | 2669            | 15/6/2006   |
| 7   | 151195       | 'Einabus            | Nablus      | 2400            | 15/6/2006   |
| 8   | 151420       | Jalud               | Nablus      | 489             | 15/6/2006   |
| 9   | 151180       | Odala               | Nablus      | 1170            | 15/6/2006   |
| 10  | 251355       | 'Izbat Abu Adam     | Salfit      | 10              | 15/6/2006   |
| 11  | 251390       | Khirbet Susa        | Salfit      | 10              | 15/6/2006   |
| 12  | 151215       | Beita               | Nablus      | 9495            | 15/6/2006   |
| 13  | 151230       | Zeita Jamma'in      | Nablus      | 2121            | 15/6/2006   |
| 14  | 251395       | Rafat               | Salfit      | 2178            | 15/6/2006   |
| 15  | 251440       | Khirbet Qeis        | Salfit      | 273             | 15/6/2006   |
| 16  | 100360       | Nazlat Abu Nar      | Tulkarem    | 211             | 28/6/2006   |
| 17  | 10220        | Birqin              | Jenin       | 6378            | 12/7/2006   |
| 18  | 452170       | Al Walaja           | Betlehem    | 1832            | 18/7/2006   |
| 19  | 452325       | Nahhalin            | Betlehem    | 6928            | 29/6/2006   |
| 20  | 452535       | Al Maniya           | Betlehem    | 842             | 25/6/2006   |
| 21  | 452230       | Husan               | Betlehem    | 6170            | 30/6/2006   |
| 22  | 452280       | Hindaza             | Betlehem    | 2323            | 9/7/2006    |
| 23  | 452320       | Bureid'a            | Betlehem    | 358             | 10/7/2006   |
| 24  | 452305       | Dhahrat an Nada     | Betlehem    | 433             | 10/7/2006   |
| 25  | 452310       | Wadi Umm Qal'a      | Betlehem    | 287             | 10/7/2006   |
| 26  | 452315       | Khallet Hamad       | Betlehem    | 514             | 10/7/2006   |
| 27  | 452445       | Wadi an Nis         | Betlehem    | 803             | 11/7/2006   |
| 28  | 452235       | Wadi Fukin          | Betlehem    | 1299            | 11/7/2006   |
| 29  | 502735       | Qinan an Namir      | Hebron      | 150             | 13/7/2006   |
| 30  | 502610       | Shamaliyyat al Hawa | Hebron      | 120             | 13/7/2006   |
| 31  | 502705       | Jurun al Louz       | Hebron      | 120             | 13/7/2006   |
| 32  | 502590       | 'Irqan Turad        | Hebron      | 550             | 13/7/2006   |
| 33  | 502680       | Beit 'Einun         | Hebron      | 2636            | 13/7/2006   |
| 34  | 503165       | Al Bira             | Hebron      | 337             | 15/7/2006   |
| 35  | 502595       | Kuziba              | Hebron      | 514             | 13/7/2006   |
| 36  | 10300        | Ash Shuhada         | Jenin       | 1879            | 12/7/2006   |
| 37  | 10385        | Telfit              | Jenin       | 500             | 12/7/2006   |
| 38  | 10230        | Al Khuljan          | Jenin       | 526             | 12/7/2006   |
| 39  | 10435        | Az Zababida         | Jenin       | 4176            | 12/7/2006   |
| 40  | 50650        | Kashda              | Tubas       |                 | 11/7/2006   |

| No. | Community ID | Community Name         | Governorate   | Population 2006 | Survey Date |
|-----|--------------|------------------------|---------------|-----------------|-------------|
| 41  | 10070        | Khirbet Suruj          | Jenin         | 60              | 12/7/2006   |
| 42  | 50525        | Salhab                 | Tubas         |                 | 11/7/2006   |
| 43  | 50490        | Ibziq                  | Tubas         |                 | 11/7/2006   |
| 44  | 50656        | Khirbet Yarza          | Tubas         |                 | 11/7/2006   |
| 45  | 100440       | Seida                  | Tulkarem      | 3325            | 11/5/2006   |
| 46  | 502985       | Iskeik                 | Hebron        | 180             | 15/7/2006   |
| 47  | 503075       | Beit Mirsim            | Hebron        | 311             | 15/7/2006   |
| 48  | 503195       | Juwai & Kafr Jul       | Hebron        | 70              | 16/7/2006   |
| 49  | 503375       | Khirbet Zanuta         | Hebron        | 80              | 16/7/2006   |
| 50  | 503235       | Somara                 | Hebron        | 150             | 16/7/2006   |
| 51  | 10395        | Mirka                  | Jenin         | 1681            | 12/7/2006   |
| 52  | 452225       | Dar Salah              | Betlehem      | 1078            | 18/7/2006   |
| 53  | 452260       | Umm 'Asla              | Betlehem      | 175             | 18/7/2006   |
| 54  | 452245       | Juhdum                 | Betlehem      | 1504            | 18/7/2006   |
| 55  | 452250       | Umm al Qasseis         | Betlehem      | 395             | 18/7/2006   |
| 56  | 452430       | Khallet al Haddad      | Betlehem      | 453             | 18/7/2006   |
| 57  | 452215       | Wadi al 'Arayis        | Betlehem      | 2345            | 18/7/2006   |
| 58  | 502870       | Wadi 'Ubeid            | Hebron        | 162             | 18/7/2006   |
| 59  | 502940       | Wadi ash Shajina       | Hebron        | 615             | 19/7/2006   |
| 60  | 502875       | Fuqeiqis               | Hebron        | 346             | 19/7/2006   |
| 61  | 502970       | Deir al 'Asal al Fauqa | Hebron        | 1999            | 19/7/2006   |
| 62  | 502435       | Khirbet ad Deir        | Hebron        | 323             | 15/6/2006   |
| 63  | 502850       | At Tabaqa              | Hebron        | 1551            | 19/7/2006   |
| 64  | 502865       | Khirbet Salama         | Hebron        | 364             | 19/7/2006   |
| 65  | 502900       | Turrama                | Hebron        | 607             | 19/7/2006   |
| 66  | 502710       | Al Khamajat            | Hebron        | 156             | 18/7/2006   |
| 67  | 502650       | Qafan al Khamis        | Hebron        | 1405            | 18/7/2006   |
| 68  | 653200       | Deir al Balah Camp     | Deir Al-Balah | 12955           | 1/7/2006    |
| 69  | 653140       | Al Bureij Camp         | Deir Al-Balah | 39146           | 1/7/2006    |
| 70  | 653210       | Al Maghazi Camp        | Deir Al-Balah | 26208           | 18/7/2006   |
| 71  | 653250       | Al Musaddar            | Deir Al-Balah | 1985            | 18/7/2006   |
| 72  | 653065       | An Nuseirat Camp       | Deir Al-Balah | 69526           | 1/7/2006    |
| 73  | 653180       | Az Zawayda             | Deir Al-Balah | 16709           | 1/7/2006    |
| 74  | 653240       | Deir al Balah          | Deir Al-Balah | 53692           | 1/7/2006    |
| 75  | 301650       | Deir Jarir             | Ramallah      | 4651            | 20/7/2006   |
| 76  | 301685       | At Tayba               | Ramallah      | 2298            | 20/7/2006   |
| 77  | 452335       | Beit Ta'mir            | Betlehem      | 1254            | 17/7/2006   |
| 78  | 452350       | Rakhme                 | Betlehem      | 1002            | 10/7/2006   |
| 79  | 452425       | Abu Nujeim             | Betlehem      | 846             | 21/7/2006   |
| 80  | 452340       | Khirbet an Nahla       | Betlehem      | 150             | 21/7/2006   |
| 81  | 452400       | Wadi Rahhal            | Betlehem      | 616             | 21/7/2006   |
| 82  | 452380       | Al Beida               | Betlehem      | 377             | 21/7/2006   |
| 83  | 452370       | Ath Thabra             | Betlehem      | 267             | 21/7/2006   |

| No. | Community ID | Community Name     | Governorate | Population 2006 | Survey Date |
|-----|--------------|--------------------|-------------|-----------------|-------------|
| 84  | 452565       | Kisan              | Betlehem    | 430             | 14/7/2006   |
| 85  | 452295       | Fakht al Jul       | Betlehem    | 276             | 14/7/2006   |
| 86  | 452300       | Artas              | Betlehem    | 3959            | 18/7/2006   |
| 87  | 452265       | Ad Doha            | Betlehem    | 7664            | 20/7/2006   |
| 88  | 452270       | Al Khadr           | Betlehem    | 10037           | 20/7/2006   |
| 89  | 452715       | Ar Rawa'in         | Betlehem    | 165             | 31/7/2006   |
| 90  | 452670       | Al 'Azazima        | Betlehem    | 100             | 31/7/2006   |
| 91  | 452660       | 'Arab ar Rashayida | Betlehem    | 1160            | 31/7/2006   |
| 92  | 452460       | Jurat ash Sham'a   | Betlehem    | 1620            | 11/7/2006   |
| 93  | 452345       | Khallet al Louza   | Betlehem    | 483             | 21/7/2006   |
| 94  | 452455       | Khirbet ad Deir    | Betlehem    | 1691            | 31/7/2006   |
| 95  | 452470       | Marah Ma'alla      | Betlehem    | 666             | 31/7/2006   |
| 96  | 452475       | Al Halqum          | Betlehem    | 195             | 31/7/2006   |
| 97  | 10495        | Sir                | Jenin       | 832             | 11/7/2006   |
| 98  | 401900       | Qalandiya Camp     | Jerusalem   | 9798            | 31/7/2006   |

**Table 2: Major WaSH situation indicators in the surveyed communities.**

| No. | Community ID | Community Name | Governorate | Households with year-round access to improved water source % | Households with year-round access to unimproved water source % | Water supplied per capita per day (liter) | Wastewater Network Coverage % | Connection to Cesspits or Septic Tank % | Availability of Solid waste Collection System % | Population Suffer from Water Born Diseases % | Water Supply Facilities Operated and Maintained by Council % | Cost Recovery for Water Supply Services % | Unaccounted for Water within Water Supply System % | Monthly Household Income Spent on W Supply % | Monthly Household Income Spent on Sanitation % | Community Needs and Comments  |
|-----|--------------|----------------|-------------|--|--|---|-------------------------------|---|---|--|--|---|--|--|--|---|
| 1   | 10070        | Khirbet Suruj  | Jenin       | 0  | 100  | 40  |                               | 100                                     |   | 8  |  |   |  | 10   |  | Major needs in the community:<br>1. Water tank<br>2. Cisterns<br>Major water sources are tankers and cisterns.  |
| 2   | 10220        | Birqin         | Jenin       | 100  | 0  | 70  | 0                             | 100                                     | 100   | 3  | 100  | 45  | 30   | 6  | 3  | Major needs in the community include rehabilitation of the water network. During the past period there were big reductions in Mekorot water supply. Major water sources are through Mekorot company and from agricultural wells, in addition to cisterns. |
| 3   | 10230        | Al Khuljan     | Jenin       | 0  | 100  | 50  | 0                             | 100                                     | 0   | 10   | 0  | 0   | 0  | 9  | 3  | Major needs in the community include water network and reservoir.   |
| 4   | 10300        | Ash Shuhada    | Jenin       | 80   | 20   | 65  | 0                             | 100                                     | 100   | 5  | 100  | 0   | 30   | 6  | 3  | Major needs in the community include:<br>1. Rehabilitation of the water network<br>2. Agricultural wells.<br>Major water sources are through Mekorot company, cisterns, and agriculture wells.  |
| 5   | 10385        | Telfit         | Jenin       | 60   | 40   | 60  | 0                             | 100                                     | 0   | 8  | 50   | 0   | 0  | 10   | 1  | Major needs are rehabilitation of the water network and cisterns.<br>Major water sources are through Mekorot company in addition to cisterns, and agricultural wells.   |
| 6   | 10395        | Mirka          | Jenin       | 50   | 50   | 70  | 0                             | 100                                     | 100   | 6  | 50   | 40  | 20   | 8  | 4  |   |

|    |        |                |          |    |     |    |   |     |     |    |     |     |    |    |   |   |
|----|--------|----------------|----------|----|-----|----|---|-----|-----|----|-----|-----|----|----|---|---|
| 7  | 10435  | Az Zababida    | Jenin    | 20 | 80  | 90 | 0 | 100 | 100 | 3  | 100 | 40  | 25 | 7  | 4 | Major needs are a main water source and cisterns.<br>Water sources are through Mekorot and cisterns, in addition to a private well.   |
| 8  | 10495  | Sir            | Jenin    | 0  | 100 | 60 | 0 | 100 | 100 | 5  |     |     |    |    |   | Major needs in the community:<br>1. Water source<br>2. Water network<br>3. Water reservoir  |
| 9  | 50490  | Ibziq          | Tubas    | 0  | 100 | 30 |   | 10  |     | 12 |     |     |    | 10 |   | Major needs include cisterns.<br>Major water sources are tankers and cisterns.  |
| 10 | 50525  | Salhab         | Tubas    | 0  | 100 | 35 | 0 | 10  | 0   | 12 |     |     |    | 10 |   | Major needs:<br>1. Cisterns<br>2. Mobile W.C s<br>Water sources are through tankers and cisterns.   |
| 11 | 50650  | Kashda         | Tubas    | 90 | 10  | 70 | 0 | 100 | 0   | 3  |     |     |    | 2  | 0 | Major needs include water network.<br>The only water source is private agriculture wells.   |
| 12 | 50656  | Khirbet Yarza  | Tubas    | 0  | 100 | 45 |   | 50  |     | 8  |     |     |    | 8  |   | Needs of the community include cisterns.<br>Major water sources are tankers and cisterns.   |
| 13 | 100360 | Nazlat Abu Nar | Tulkarem | 0  | 100 | 90 | 0 | 100 | 100 | 8  |     |     |    | 3  | 3 | Needs of the community :<br>1. Water reservoir<br>2. Waste water network<br>Major water sources are agricultural wells (800 m <sup>3</sup> ) through agriculture pipes, and cisterns ( 200 m <sup>3</sup> ) |
| 14 | 100440 | Seida          | Tulkarem |    | 100 | 55 |   | 100 | 100 | 5  |     |     |    | 7  | 3 | Major needs are:<br>1. Water network<br>2. Water reservoir (has fund from UNDP)<br>3. Waste water network   |
| 15 | 151180 | Odala          | Nablus   | 90 | 10  | 80 | 0 | 0   | 100 | 2  | 100 | 100 | 20 | 8  | 4 | Chlorination of water is done through Mekorot company.  |
| 16 | 151195 | 'Einabus       | Nablus   | 80 | 20  | 50 | 0 | 0   | 100 | 2  | 80  | 70  | 35 | 8  | 4 | Major needs of the community:<br>1. Extension of the water network<br>2. Increasing water quantity supplied by Mekorot company.<br>Water chlorination is done through                                       |

|    |        |                   |        |    |     |    |   |   |     |   |     |     |    |    |   |  |   |
|----|--------|-------------------|--------|----|-----|----|---|---|-----|---|-----|-----|----|----|---|--|---|
|    |        |                   |        |    |     |    |   |   |     |   |     |     |    |    |   |  | Mekorot company.  |
| 17 | 151200 | Yanun             | Nablus | 0  | 100 | 30 | 0 | 0 | 100 | 4 |     |     |    | 10 | 4 |  | Major needs of the community:<br>1. Cisterns<br>2. Water source<br>Major water sources are cisterns (100 m <sup>3</sup> ), tankers bringing water from Qusra Mekorot filling point (400 m <sup>3</sup> ), and Yanun spring (50 m <sup>3</sup> ).<br>Chlorine tablets are used by the community for cisterns, which is distributed by the local council and provided by the Ministry of health.<br>No water network is available in the community. |
| 18 | 151215 | Beita             | Nablus | 0  | 100 | 70 | 0 | 0 | 100 | 1 | 100 | 100 | 25 | 8  | 5 |  | Major needs of the community include extension of the water network and rehabilitation of the local spring.<br>Chlorination of the used water is done through Mekorot company.  |
| 19 | 151230 | Zeita<br>Jamma'in | Nablus | 10 | 90  | 60 | 0 | 0 | 100 | 3 | 90  | 100 | 20 | 10 | 5 |  | Major needs include extension of the water network. Chlorination of used water is done through Mekorot company.   |
| 20 | 151265 | Osarin            | Nablus | 0  | 100 | 30 | 0 | 0 | 100 | 4 |     |     |    | 9  | 5 |  | Major needs of the community include cisterns and water network.<br>Major water sources in the community are: cisterns (500 m <sup>3</sup> ) and tankers bringing water from Yetma and Qablan Mekorot filling point (3300 m <sup>3</sup> ). Chlorine tablets are used for cisterns, distributed by the local council and provided by the Ministry of Health. The community has no water network.  |
| 21 | 151270 | Aqraba            | Nablus | 0  | 100 | 40 | 0 | 0 | 100 | 2 |     |     |    | 10 | 3 |  | Major needs in the community include cisterns and water source.<br>Current water sources are cisterns (7000 m <sup>3</sup> ) and tankers bringing water from Yetma and Qusra Mekorot points (1000 m <sup>3</sup> ). Chlorine tablets are used for cisterns distributed by local council and provided by Ministry of Health. No water network is   |

|    |        |           |        |   |     |    |   |   |     |   |  |  |  |    |   |  |
|----|--------|-----------|--------|---|-----|----|---|---|-----|---|--|--|--|----|---|--|
|    |        |           |        |   |     |    |   |   |     |   |  |  |  |    |   | available in the community.  |
| 22 | 151345 | Jurish    | Nablus | 0 | 100 | 35 | 0 | 0 | 100 | 3 |  |  |  | 10 | 4 | <p>Major needs of the community:</p> <ol style="list-style-type: none"> <li>1. Cisterns</li> <li>2. Water source</li> <li>3. Water network</li> </ol> <p>Major water sources are cisterns (1000 m<sup>3</sup>), tankers bringing water from Qusra Mekorot filling point (2300 m<sup>3</sup>) and local spring (500 m<sup>3</sup>). The community uses chlorine tablets for cisterns where it is distributed by local council and provided by the Ministry of Health. The community has no water network.</p> |
| 23 | 151410 | Qaryut    | Nablus | 0 | 100 | 40 | 0 | 0 | 100 | 4 |  |  |  | 10 | 3 | <p>Major needs of the community include cisterns and water network.</p> <p>Major water sources are cisterns (1100 m<sup>3</sup>), tankers bringing water from Shillo settlement / Mekorot filling points (4000 m<sup>3</sup>) and spring (600 m<sup>3</sup>). The community uses chlorine tablets for cisterns where it is distributed by local council and provided by the Ministry of Health.</p> <p>There is no water network in the community.</p>   |
| 24 | 151420 | Jalud     | Nablus | 0 | 100 | 35 | 0 | 0 | 100 | 5 |  |  |  | 9  | 4 | <p>Major needs of the community:</p> <ol style="list-style-type: none"> <li>1. Cisterns</li> <li>2. Water source</li> </ol> <p>Major water sources are cisterns (500 m<sup>3</sup>), tankers that bring water from Mekorot filling point (700 m<sup>3</sup>), and local spring (200 m<sup>3</sup>). Chlorine tablets are used for cisterns where it is distributed by local council and provided by Ministry of Health. There is no water network in the community.</p>                                      |
| 25 | 151435 | 'Ammuriya | Nablus | 0 | 100 | 40 | 0 | 0 | 100 | 5 |  |  |  | 11 | 3 | <p>Major needs in the community :</p> <ol style="list-style-type: none"> <li>1. Cisterns</li> <li>2. Water source</li> <li>3. Water network</li> </ol> <p>Major water sources in the community are cisterns (50 m<sup>3</sup>), tankers that bring water</p>   |



|    |        |                |           |     |  |    |    |     |     |   |     |    |    |    |     |  |  |
|----|--------|----------------|-----------|-----|--|----|----|-----|-----|---|-----|----|----|----|-----|--|--|
|    |        |                |           |     |  |    |    |     |     |   |     |    |    |    |     |  | an average quantity of 7000 m <sup>3</sup> / month. Residents of this community and Bedouins living nearby the community are getting additional water from a filling point through tankers.  |
| 32 | 401900 | Qalandiya Camp | Jerusalem | 100 |  | 90 | 98 | 2   | 100 |   |     | 70 | 25 | 10 |     |  | Major needs in the community include rehabilitation of the water and wastewater networks and building a waste water treatment station. Main water source is Ein Samiya through JWU (Jerusalem Water Undertaken).   |
| 33 | 452170 | Al Walaja      | Betlehem  | 100 |  | 76 |    | 100 | 100 |   |     | 50 | 40 | 1  | 1   |  | Major needs include rehabilitation of the water network: 2" diam, around 2 km and 1" diam, around 2 km. This is in addition to the need to add a new line of around 15 km.   |
| 34 | 452215 | Wadi al 'Aryis | Betlehem  | 100 |  | 71 |    | 100 | 100 | 0 | 100 | 40 | 25 | 1  | 1   |  | Major needs in the community include rehabilitation of the water network: 2" diam around 2 km and 1" diam, around 2 km. Around 20 cisterns are needed.   |
| 35 | 452225 | Dar Salah      | Betlehem  | 100 |  | 62 |    | 100 | 100 |   | 100 | 50 | 25 | 1  | 0.5 |  |  |
| 36 | 452230 | Husan          | Betlehem  | 100 |  | 47 |    | 100 | 80  | 0 | 100 | 30 | 25 | 2  | 1   |  | Major needs in the community include improving the water network by changing the 2" pipes (5 km), and 1" pipes (2 km); adding a new water line (2" pipes) for new households (around 2 km ); and cisterns (around 50).   |
| 37 | 452235 | Wadi Fukin     | Betlehem  | 100 |  | 70 |    | 100 | 80  | 0 | 100 | 70 | 30 | 1  |     |  | Major needs include rehabilitation of the water network and increasing the diameter from 0.5" to 1.5" for around 1300 m; increasing the diameter from 0.5" to 2" for around 300 m. Cisterns ( around 20) and agriculture pools for farmers ( around 15) are needed in the community. |
| 38 | 452245 | Juhdum         | Betlehem  | 100 |  | 62 |    | 100 | 100 | 0 | 100 | 40 | 25 | 1  | 0.5 |  | Major needs in the community:<br>1. Rehabilitation of water network (2" diameter of around 1 km and 1" diameter of around 1 km).   |

|    |        |                |          |     |  |     |     |     |     |   |     |    |    |     |     |  |
|----|--------|----------------|----------|-----|--|-----|-----|-----|-----|---|-----|----|----|-----|-----|--|
| 39 | 452250 | Umm al Qasseis | Betlehem | 100 |  | 63  |     | 100 | 100 | 0 | 100 | 50 | 25 | 1   | 0.5 | Major needs in the community include rehabilitation of the water network (2" diameter of around 500m and 1" diameter of around 300m). This community is part of Dar Salah community.   |
| 40 | 452260 | Umm 'Asla      | Betlehem | 100 |  | 61  |     | 100 | 100 | 0 | 100 | 50 | 25 | 1   | 0.5 | Major needs in the community include rehabilitation of water network (2" diameter of around 250m). This community is part of Dar Salah community.  |
| 41 | 452265 | Ad Doha        | Betlehem | 100 |  | 92  | 100 | 0   | 100 | 0 |     | 55 | 40 | 1.3 | 1   | Major needs of the community include rehabilitation of the water network (changing a 2" diameter pips of around 5 km) and changing 3" diameter pipes of around 2 km; in addition to adding new pipes to cover new areas (2" diameter of around 3 km).<br>Water distribution is managed by Bethlehem Water and Waste water Utility. Several quarries are available in the area in addition to factories that consumes considerable amount of water. |
| 42 | 452270 | Al Khadr       | Betlehem | 100 |  | 86  | 100 |     | 100 |   |     | 55 | 40 | 1.3 | 1   | Water network rehabilitation including 2" diameter pipes (6 km), 1" diameter pipes (3 km), and 3" diameter pipes (1.5 km); about 25 cisterns are needed in the community.  |
| 43 | 452280 | Hindaza        | Betlehem | 100 |  | 100 |     | 100 | 30  | 0 | 100 | 10 | 35 | 1   | 1   | Major needs in the community include rehabilitation of water network by adding 3" main line (around 6 km), 2" main line (around 10 km), 1" main line (around 15 km ; reservoir (2000 m <sup>3</sup> ) to support the total area of Hindasa, Buraida, Doha, Al Nada, Wadi Umm Qal'a and Khallet Hamed;around 60 cisterns are needed in the community.   |
| 44 | 452295 | Fakht al Jul   | Betlehem | 100 |  | 60  |     | 100 | 70  | 0 | 100 | 30 | 30 | 1   | 0.5 | Major needs include changing 1" diameter pipes (around 0.8 km), and 2" diameter pipes (around 0.5 km), and around 10 cisterns are needed in the community.   |





|    |        |                  |          |     |  |    |  |     |     |   |     |    |    |   |     |  |
|----|--------|------------------|----------|-----|--|----|--|-----|-----|---|-----|----|----|---|-----|--|
|    |        |                  |          |     |  |    |  |     |     |   |     |    |    |   |     | water Utility.   |
| 53 | 452345 | Khallet al Louza | Betlehem | 100 |  | 58 |  | 100 | 50  | 0 | 100 | 20 | 30 | 1 | 0.5 | Major needs in the community:<br>1. Connecting the community with new water source including a 2" diameter pipes outside the village (2 km), and 2" diameter pipes inside the village (2 km).<br>2. Cisterns (around 30 are needed).   |
| 54 | 452350 | Rakhme           | Betlehem | 100 |  | 66 |  | 100 | 100 |   |     | 50 | 40 | 1 | 0.5 | Major needs in the community:<br>1.Rehabilitation of the water network including changing 2" diameter pipes (2 km), and changing 1" diameter pipes (1 km)<br>2. Cisterns (around 105 are needed)<br>Water distribution in the community is managed by Bethlehem Water and Waste water Utility.                         |
| 55 | 452370 | Ath Thabra       | Betlehem | 100 |  | 62 |  | 100 | 50  | 0 | 100 | 5  | 20 | 1 | 0.5 | Major needs in the community include:<br>1. Adding 1" diameter pipes (1 km), adding 0.75" diameter pipes (1.2 km).<br>2. Cisterns (around 10 are needed)<br>3. Providing water supply separately from Abu Injaim and Khalayel Allouz localities. It is a part of Wadi Rahhal village and sharing the same water meter. |
| 56 | 452380 | Al Beida         | Betlehem | 100 |  | 61 |  | 100 | 50  | 0 | 100 | 8  | 20 | 1 | 0.5 | Major needs in the community:<br>1. Adding 1" diameter pipes (1 km), adding 0.75" diameter pipes (1.2 km), and adding 0.5" diameter pipes (0.5 km).<br>2. Cisterns (around 12 are needed)<br>It is part of Wadi Rahhal village and sharing the same water meter.   |
| 57 | 452400 | Wadi Rahhal      | Betlehem | 100 |  | 60 |  | 100 | 50  | 0 | 100 | 10 | 20 | 1 | 0.5 | Major needs in the community include :<br>1. Adding 1" diameter pipes (1.2 km), adding 0.75" diameter pipes (2 km), and adding 0.5" diameter pipes (1.5 km).<br>2. Cisterns (around 25 cisterns are needed).<br>Main water source is through the Israeli Afrat settlement.   |

|    |        |                   |          |     |  |    |  |     |     |   |     |    |    |   |     |  |
|----|--------|-------------------|----------|-----|--|----|--|-----|-----|---|-----|----|----|---|-----|--|
| 58 | 452425 | Abu Nujeim        | Betlehem | 100 |  | 59 |  | 100 | 50  | 0 | 100 | 20 | 20 | 1 | 0.5 | Major needs in the community include:<br>1. Adding 2" diameter pipes (2 km), and adding 1" diameter pipes (3 km) .<br>2. Cisterns (around 25 are needed).<br>Water distribution in the community is managed by Bethlehem Water and Waste water Utility.  |
| 59 | 452430 | Khallet al Haddad | Betlehem | 100 |  | 73 |  | 100 |     |   | 100 | 30 | 30 | 1 |     | Major needs in the community:<br>1. Providing new connection to the community by a 2" diameter pipe (1500 m) where the planned connection should be from other direction (Tuqu' community).<br>2. Cisterns (around 25 are needed).<br>3. Agricultural pools (8 are needed).<br>4. Provision of water through tankers (10 m <sup>3</sup> ).                                 |
| 60 | 452445 | Wadi an Nis       | Betlehem | 100 |  | 58 |  | 100 | 50  | 0 | 100 | 55 | 10 | 1 |     | Major needs in the community:<br>1. Adding a 2" main line (4 km) and changing the small 0.5" to 2" pipes (around 3 km), and 0.75" to 2" (around 2 km).<br>2. Cisterns ( around 20 are needed)<br>3. Replacement of 90 water meters in the community.   |
| 61 | 452455 | Khirbet ad Deir   | Betlehem | 100 |  | 45 |  | 100 | 100 | 0 | 100 | 30 | 30 | 1 | 0.5 | Major needs in the community:<br>1. Adding 2" diameter pipes (2 km), and changing 2" diameter pipes (1.5 km)<br>2. Cisterns (around 20 are needed)<br>This community is part of Taqu' municipality.  |
| 62 | 452460 | Jurat ash Sham'a  | Betlehem | 100 |  | 45 |  | 100 | 60  | 0 | 100 | 20 | 54 | 1 | 0.5 | Major needs in the community include<br>1. Water network improving including installing a 4" diameter pipes (2 km), 2" diameter pipes (1 km), and 1" diameter pipes (2 km).<br>2. Cisterns (about 50 are needed)<br>3. Central reservoir (3000 m <sup>3</sup> ) for the area<br>Water distribution in the community is managed by Bethlehem Water and Waste water Utility. |

|    |        |                    |          |     |  |     |  |     |     |   |     |    |    |   |     |   |
|----|--------|--------------------|----------|-----|--|-----|--|-----|-----|---|-----|----|----|---|-----|---|
| 63 | 452470 | Marah Ma'alla      | Betlehem | 100 |  | 42  |  | 100 | 50  | 0 | 100 | 40 | 30 | 1 | 0.5 | Major needs in the community:<br>1. Adding 2" diameter pipes (1.5 km), and changing 2" diameter pipes (1.5 km)<br>2. Cisterns (around 30 are needed).   |
| 64 | 452475 | Al Halqum          | Betlehem | 100 |  | 45  |  | 100 | 100 | 0 | 100 | 40 | 30 | 1 | 0.5 | Major needs in the community:<br>1. Rehabilitation of the water network<br>2. Spare parts: pipes, fittings, and water meters.<br>3. Vehicle for maintenance work.<br>4. Replacement of the water network parts that was damaged by Israeli forces.<br>Main water source is Abu Shban spring.<br>This community is part Tuqu' municipality |
| 65 | 452535 | Al Maniya          | Betlehem | 100 |  | 277 |  | 100 | 100 | 0 | 100 | 40 | 30 | 2 | 1   | Major needs in the community include:<br>1. Rehabilitation of the water network<br>2. Adding 2" main line (1.5 km)<br>3. Cisterns (around 20 are needed in the total area)<br>4. Changing the 2" pipes (2 km) and 1" pipes (1.5 km).<br>There is a large percentage of losses in the water network.                                       |
| 66 | 452565 | Kisan              | Betlehem | 100 |  | 46  |  | 100 |     |   | 100 | 3  | 30 |   |     | Major needs in the community:<br>1. Solid waste collection system and containers<br>2. Cisterns (around 20 are needed)<br>This is a Bedouin community that depends on livestock as a major source of income, and therefore, used water quantities are large.  |
| 67 | 452660 | 'Arab ar Rashayida | Betlehem | 100 |  | 40  |  | 100 |     |   | 100 |    | 30 |   |     | Major needs in the community include:<br>1. Adding 2" diameter pipes (3.5Km), and 1" diameter pipes<br>2. Cisterns ( around 100 are needed)<br>3. Water tankers.  |
| 68 | 452670 | Al 'Azazima        | Betlehem | 100 |  | 42  |  | 100 |     |   | 100 |    |    |   |     | Major needs in the community include new water network (1.5" diameter pipes / 500 m)  |
| 69 | 452715 | Ar Rawa'in         | Betlehem | 60  |  | 45  |  | 100 |     |   | 100 |    |    | 1 |     | Major needs in the community include water network (1.5" pipes / 1.5 km)  |

|    |        |                      |        |    |     |     |  |     |    |   |    |    |    |    |   |  |
|----|--------|----------------------|--------|----|-----|-----|--|-----|----|---|----|----|----|----|---|--|
| 70 | 502435 | Khirbet ad Deir      | Hebron | 90 | 10  | 155 |  | 90  |    | 2 | 90 | 30 | 30 | 15 |   | Major needs of the community:<br>1. Sewer system<br>2. Spare parts.<br>3. Solid waste system<br>Water use is very high because it is an agriculture community and there is a large percentage of water losses.   |
| 71 | 502590 | 'Irqan Turad         | Hebron | 80 | 20  | 90  |  | 100 | 0  |   | 80 | 20 | 30 | 15 | 2 | Major needs in the community:<br>1. Solid waste collection system<br>2. Water network rehabilitation and extension.  |
| 72 | 502595 | Kuziba               | Hebron | 95 | 5   | 100 |  | 0   | 50 |   | 95 | 20 | 30 | 15 | 2 | Major needs in the community:<br>1. Solid waste containers<br>2. Spare parts<br>Part of supplied quantities of water is used for agriculture purposes.   |
| 73 | 502610 | Shamaliyy at al Hawa | Hebron | 95 | 5   | 65  |  | 95  | 0  |   | 95 | 20 | 30 | 15 |   | Major needs in the community include:<br>1. Solid waste collection system<br>2. Spare parts ( meters, fittings and pipes)<br>This community is part of Sa'ir community.  |
| 74 | 502650 | Qafan al Khamis      | Hebron | 80 | 20  | 40  |  | 100 | 90 | 2 | 80 | 20 | 20 | 15 | 2 | Major needs of the community include:<br>1. Extension of the water network<br>2. Spare parts ( meters, fittings and pipes)<br>Major water sources are Mekorot, tankers, and cisterns.<br>This community is south of Ash Shukh and water quantities are part of Ash Shukh water supply. |
| 75 | 502680 | Beit 'Einun          | Hebron | 95 | 5   | 35  |  | 100 | 90 |   | 95 | 20 | 50 | 15 | 2 | Major needs of the community include rehabilitation of the water network.<br>About 500 m <sup>3</sup> of supplied quantity is coming through cisterns.   |
| 76 | 502705 | Jurun al Louz        | Hebron |    | 100 | 40  |  | 95  |    | 2 |    |    |    | 20 |   | Major needs of the community include:<br>1. Water network<br>2. Water source<br>3. Solid waste collection system<br>This community is south of Sa'ir with no services (no water network, no electricity, and no solid waste system) and depends on agriculture and animals as a main   |

|    |        |                |        |    |     |    |   |     |    |   |    |    |    |    |   |   |
|----|--------|----------------|--------|----|-----|----|---|-----|----|---|----|----|----|----|---|---|
|    |        |                |        |    |     |    |   |     |    |   |    |    |    |    |   | source of income for the community.   |
| 77 | 502710 | Al Khamajat    | Hebron | 50 | 50  | 40 |   | 100 | 50 |   | 50 | 40 | 20 | 15 | 2 | <p>Major needs of the community:</p> <ol style="list-style-type: none"> <li>1. Extension of the water network</li> <li>2. Solid waste container</li> <li>3. Spare parts ( meters, fittings and pipes)</li> </ol> <p>Major water sources are through Mekorot company, tankers, and cisterns.<br/>This community is north east Taqu' and it is part of it, therefore, water quantities supplied to this community are part of Taqu' water supply.</p> |
| 78 | 502735 | Qinan an Namir | Hebron | 0  | 100 | 40 |   | 95  | 0  | 2 |    |    |    | 20 |   | <p>Major needs of the community include:</p> <ol style="list-style-type: none"> <li>1. Water source</li> <li>2. Water network</li> <li>3. Solid waste collection system</li> </ol> <p>This community is south of Sa'ir with no services (no water network, no electricity, and no solid waste collection system).<br/>Major sources of income for the community are agriculture and livestock.</p>  |
| 79 | 502850 | At Tabaqa      | Hebron | 0  | 100 | 30 |   | 100 | 50 | 2 |    |    |    | 20 | 2 | <p>Major needs of the community include:</p> <ol style="list-style-type: none"> <li>1. Cisterns</li> <li>2. Water network</li> <li>3. Solid waste collection system</li> </ol> <p>Major water sources are tankers and cisterns. There is no water network in the community.</p>   |
| 80 | 502865 | Khirbet Salama | Hebron | 0  | 100 | 35 | 0 | 100 | 70 | 2 |    |    |    | 20 | 1 | <p>Major needs in the community:</p> <ol style="list-style-type: none"> <li>1. Water source</li> <li>2. Water network</li> <li>3. Solid waste collection system</li> </ol> <p>Major water sources are tankers and cisterns. There is no water network in the community.</p>   |

|    |        |                        |        |    |     |    |  |     |    |   |    |    |    |    |   |
|----|--------|------------------------|--------|----|-----|----|--|-----|----|---|----|----|----|----|---|
| 81 | 502870 | Wadi 'Ubeid            | Hebron | 0  | 100 | 40 |  | 100 |    | 2 |    |    |    | 20 | Major needs in the community:<br>1. Water source<br>2. Water network<br>3. Solid waste collection system<br>Major water sources are tankers and cisterns.   |
| 82 | 502875 | Fuqeiqis               | Hebron |    | 100 | 35 |  | 100 |    | 2 |    |    |    | 20 | Major needs in the community:<br>1. Water network<br>2. Solid waste collection system<br>Major water sources are tankers and cisterns. There is no water network in the community.  |
| 83 | 502900 | Turrama                | Hebron | 0  | 100 | 36 |  | 100 | 50 | 2 |    |    |    | 20 | 1 Major needs in the community:<br>1. Water network<br>2. Solid waste collection system   |
| 84 | 502940 | Wadi ash Shajina       | Hebron | 0  | 100 | 35 |  | 100 | 50 | 2 |    |    |    | 20 | Major needs in the community:<br>1. Water network<br>2. Solid waste collection system   |
| 85 | 502970 | Deir al 'Asal al Fauqa | Hebron | 80 | 20  | 30 |  |     |    | 2 | 80 | 20 | 20 | 20 | Major needs in the community:<br>1. Extension of the water network<br>2. Solid waste collection system<br>3. Spare parts (meters, pipes and fittings)<br>Available water network covers 80% of households. During 2005 the local council stopped supplying people through the network due to the large water losses and people were supplied by tankers from the main connection. |
| 86 | 502985 | Iskeik                 | Hebron | 90 | 10  | 44 |  | 100 | 0  | 2 | 90 | 20 | 20 | 15 | Major needs in the community:<br>1. Solid waste collection system<br>2. Spare parts (water meters, pipes and fittings).<br>The water network was constructed in 2001 but it worked only for 2 years and water is supplied only in winter because the water source is very far so they depend mainly on cisterns. Water quantities are estimated as 100 m <sup>3</sup> / month.    |

|    |        |                  |        |   |     |    |   |     |   |   |  |  |  |    |  |
|----|--------|------------------|--------|---|-----|----|---|-----|---|---|--|--|--|----|--|
| 87 | 503075 | Beit Mirsim      | Hebron |   | 100 | 50 | 0 | 95  | 0 | 2 |  |  |  | 20 | <p>Major needs in the community:</p> <ol style="list-style-type: none"> <li>1. Solid waste collection system</li> <li>2. Water network</li> </ol> <p>This community is very close to the Wall and it does not have basic services (no electricity, no water network) and about 500 dunoms of its land were confiscated and seven cisterns were damaged. Major water sources are cisterns and tankers.</p>  |
| 88 | 503165 | Al Bira          | Hebron | 0 | 100 | 33 |   | 100 | 0 | 2 |  |  |  |    | <p>Major needs :</p> <ol style="list-style-type: none"> <li>1. Water source</li> <li>2. Spare parts (pipes and fittings)</li> <li>3. Solid waste collection system.</li> </ol> <p>The main water line (3") was destroyed since 2005 during the road pavement and the water network is not working now. Before its destruction, the water network was supplying water only during winter because the water source is very far from the community. Major water sources now are tankers and cisterns.</p> |
| 89 | 503195 | Juwai & Kafr Jul | Hebron |   | 100 | 45 |   |     |   | 3 |  |  |  | 20 | <p>This is a seasonal community occupied during spring time only. It has no services (no electricity and no water network)</p>   |
| 90 | 503235 | Somara           | Hebron | 0 | 100 | 44 | 0 | 100 |   | 2 |  |  |  | 20 | <p>Major needs in the community:</p> <ol style="list-style-type: none"> <li>1. Water network</li> <li>2. Solid waste collection system</li> </ol> <p>Water sources are tankers and cisterns. There is no water network in the community.</p>   |
| 91 | 503375 | Khirbet Zanuta   | Hebron | 0 | 100 | 40 | 0 | 50  | 0 | 3 |  |  |  | 20 | <p>Major needs in the community:</p> <ol style="list-style-type: none"> <li>1. Solid waste collection system</li> <li>2. Water network</li> <li>3. Water source</li> </ol> <p>This is a Bedouin community. Livestock is a major source of income. The community has no water network or electricity. Major water sources are cisterns and water tankers.</p>   |

|    |        |                    |               |     |   |    |    |     |    |  |     |  |  |    |   |  |
|----|--------|--------------------|---------------|-----|---|----|----|-----|----|--|-----|--|--|----|---|--|
| 92 | 653065 | An Nuseirat Camp   | Deir Al-Balah | 100 | 0 | 75 | 45 | 55  | 65 |  | 100 |  |  | 10 | 3 | Major needs in the community:<br>1. Improve solid waste collection system<br>2. Provide municipality by fuel to operate the water source<br>Gaza Strip is currently suffering from sever energy problem after attacking electricity station recently.  |
| 93 | 653140 | Al Bureij Camp     | Deir Al-Balah | 100 | 0 | 58 | 40 | 60  | 65 |  | 100 |  |  | 5  | 3 | Major needs in the community:<br>1. Improve solid waste collection system.<br>2. Provide municipality with fuel to operate the water sources.<br>Gaza Strip is currently suffering from sever energy problem after attacking electricity station recently.   |
| 94 | 653180 | Az Zawayda         | Deir Al-Balah | 100 | 0 | 93 | 0  | 100 | 50 |  | 100 |  |  | 10 | 5 | Major needs in the community:<br>1. Improve solid waste collection system<br>2. Provide municipality with fuel to operate the water source<br>Gaza Strip is currently suffering from sever energy problem after attacking electricity station recently.  |
| 95 | 653200 | Deir al Balah Camp | Deir Al-Balah | 100 |   | 78 | 80 | 20  | 80 |  | 100 |  |  | 5  | 3 | Major needs in the community:<br>1. Improve water supply network inside the camp the western area of camp didn't receive enough water because of the small diameters of the water network.<br>One of the power supplies connected to water well in Deir Al Balah was directly damaged by the Israeli forces. |
| 96 | 653210 | Al Maghazi Camp    | Deir Al-Balah |     |   |    |    |     |    |  |     |  |  |    |   |  |
| 97 | 653240 | Deir al Balah      | Deir Al-Balah | 100 | 0 | 76 | 40 | 60  | 65 |  | 100 |  |  | 10 | 5 | Major needs in the community:<br>1. Fuel for operation of water supplies and waste water stations<br>2. Fixing damages resulted from the Israeli attacks of power supplies of water well in Deir Al Balah.   |
| 98 | 653250 | Al Musaddar        | Deir Al-Balah | 100 | 0 | 84 | 0  | 100 | 70 |  | 100 |  |  | 5  | 3 | Major needs in the community:<br>1. Direct support to people affected by Israeli attacks and recent incursions of the  |



**Table 3: Relative change in tankers water price**

| No. | Community ID | Community Name         | Governorate | Population 2006 | Tankers Average Price now / NIS per m <sup>3</sup> | Tankers Average Price before Intifada / NIS per m <sup>3</sup> |
|-----|--------------|------------------------|-------------|-----------------|--|--|
| 1   | 10070        | Khirbet Suruj          | Jenin       | 60              | 15.0   | 10.0   |
| 2   | 10220        | Birqin                 | Jenin       | 6378            | 11.0   | 8.0  |
| 3   | 10230        | Al Khuljan             | Jenin       | 526             | 14.0   | 10.0   |
| 4   | 10385        | Telfit                 | Jenin       | 500             | 8.0  | 6.0  |
| 5   | 10395        | Mirka                  | Jenin       | 1681            | 12.0   | 10.0   |
| 6   | 10435        | Az Zababida            | Jenin       | 4176            | 10.0   | 10.0   |
| 7   | 10495        | Sir                    | Jenin       | 832             | 10.0   | 7.0  |
| 8   | 50490        | Ibziq                  | Tubas       |                 | 20.0   | 10.0   |
| 9   | 50525        | Salhab                 | Tubas       |                 | 20.0   | 20.0   |
| 10  | 50656        | Khirbet Yarza          | Tubas       |                 | 18.0   | 12.0   |
| 11  | 100440       | Seida                  | Tulkarem    | 3325            | 10.0   | 7.0  |
| 12  | 151195       | 'Einabus               | Nablus      | 2400            | 15.0   | 10.0   |
| 13  | 151200       | Yanun                  | Nablus      | 166             | 20.0   | 15.0   |
| 14  | 151230       | Zeita Jamma'in         | Nablus      | 2121            | 12.0   | 8.0  |
| 15  | 151265       | Osarin                 | Nablus      | 1762            | 10.0   | 8.0  |
| 16  | 151270       | Aqraba                 | Nablus      | 8573            | 12.0   | 10.0   |
| 17  | 151345       | Jurish                 | Nablus      | 1496            | 16.0   | 10.0   |
| 18  | 151410       | Qaryut                 | Nablus      | 2669            | 12.0   | 10.0   |
| 19  | 151420       | Jalud                  | Nablus      | 489             | 10.0   | 10.0   |
| 20  | 151435       | 'Ammuriya              | Nablus      | 338             | 12.0   | 10.0   |
| 21  | 251440       | Khirbet Qeis           | Salfit      | 273             | 12.0   | 8.0  |
| 22  | 301685       | At Tayba               | Ramallah    | 2298            | 10.0   | 5.0  |
| 23  | 502590       | 'Irqan Turad           | Hebron      | 550             | 18.0   | 15.0   |
| 24  | 502650       | Qafan al Khamis        | Hebron      | 1405            | 15.0   | 12.0   |
| 25  | 502680       | Beit 'Einun            | Hebron      | 2636            | 15.0   | 12.0   |
| 26  | 502705       | Jurun al Louz          | Hebron      | 120             | 20.0   | 15.0   |
| 27  | 502710       | Al Khamajat            | Hebron      | 156             | 15.0   | 10.0   |
| 28  | 502735       | Qinan an Namir         | Hebron      | 150             | 20.0   | 15.0   |
| 29  | 502850       | At Tabaqa              | Hebron      | 1551            | 17.0   | 12.0   |
| 30  | 502865       | Khirbet Salama         | Hebron      | 364             | 20.0   | 15.0   |
| 31  | 502870       | Wadi 'Ubeid            | Hebron      | 162             | 20.0   | 15.0   |
| 32  | 502875       | Fuqeiqis               | Hebron      | 346             | 20.0   | 15.0   |
| 33  | 502900       | Turrama                | Hebron      | 607             | 16.0   | 12.0   |
| 34  | 502940       | Wadi ash Shajina       | Hebron      | 615             | 16.0   | 12.0   |
| 35  | 502970       | Deir al 'Asal al Fauqa | Hebron      | 1999            | 25.0   | 15.0   |
| 36  | 502985       | Iskeik                 | Hebron      | 180             | 20.0   | 15.0   |
| 37  | 503075       | Beit Mirsim            | Hebron      | 311             | 20.0   | 15.0   |
| 38  | 503165       | Al Bira                | Hebron      | 337             | 20.0   | 15.0   |
| 39  | 503195       | Juwai & Kafr Jul       | Hebron      | 70              | 20.0   | 15.0   |
| 40  | 503235       | Somara                 | Hebron      | 150             | 20.0   | 15.0   |
| 41  | 503375       | Khirbet Zanuta         | Hebron      | 80              | 20.0   | 15.0   |

**Table 4: Effects of fixed checkpoints (FCP) on communities**

| No. | Community ID | Community Name         | Governorate | Population 2006 | FCP Effect on Tankers Supply | FCP Name            | FCP Effect on Maintenance Team Access | FCP Name   | FCP Effect on PHC Access | FCP Name   |
|-----|--------------|------------------------|-------------|-----------------|------------------------------|---------------------|---------------------------------------|------------|--------------------------|------------|
| 1   | 151410       | Qaryut                 | Nablus      | 2669            |                              |                     |                                       |            | 1                        | Hiwwara    |
| 2   | 301650       | Deir Jarir             | Ramallah    | 4651            |                              |                     | 1                                     | Karamilo   | 1                        | Karamilo   |
| 3   | 301685       | At Tayba               | Ramallah    | 2298            | 1                            | Karamilo            | 1                                     | Karamilo   | 1                        | Karamilo   |
| 4   | 401900       | Qalandiya Camp         | Jerusalem   | 9798            |                              |                     | 1                                     | Qalandiya  |                          | Qalandiya  |
| 5   | 502680       | Beit 'Einun            | Hebron      | 2636            | 1                            | Beit 'Enun          | 1                                     | Beit 'Enun | 1                        | Beit 'Enun |
| 6   | 502875       | Fuqeiqis               | Hebron      | 346             | 2                            | Night and Beit Awwa |                                       |            |                          |            |
| 7   | 502970       | Deir al 'Asal al Fauqa | Hebron      | 1999            | 2                            | Beit Awwa           |                                       |            |                          |            |
| 8   | 503235       | Somara                 | Hebron      | 150             | 1                            | Al Ramadin          |                                       |            |                          |            |
| 9   | 503375       | Khirbet Zanuta         | Hebron      | 80              | 1                            | Wad Al Khalil       |                                       |            |                          |            |

**Table 5: Effects of mobile checkpoints, earth mounds, curfew, and the WALL on communities.**

| No. | Community ID | Community Name         | Governorate | Population 2006 | MCP Effect on  |                         |            | Earth Mounds Effect on |                         |            | Curfew Effect on Tankers |                         |            | Wall Effect on |                         |            |
|-----|--------------|------------------------|-------------|-----------------|----------------|-------------------------|------------|------------------------|-------------------------|------------|--------------------------|-------------------------|------------|----------------|-------------------------|------------|
|     |              |                        |             |                 | Tankers Supply | Maintenance Team Access | PHC Access | Tankers Supply         | Maintenance Team Access | PHC Access | Tankers Supply           | Maintenance Team Access | PHC Access | Tankers Supply | Maintenance Team Access | PHC Access |
| 1   | 10230        | Al Khuljan             | Jenin       | 526             | 1              |                         |            |                        |                         |            |                          |                         |            |                |                         |            |
| 2   | 10435        | Az Zababida            | Jenin       | 4176            | 1              | 1                       | 1          |                        |                         |            |                          |                         |            |                |                         |            |
| 3   | 100440       | Seida                  | Tulkarem    | 3325            | 1              |                         | 1          |                        |                         |            |                          |                         |            |                |                         |            |
| 4   | 151410       | Qaryut                 | Nablus      | 2669            | 1              |                         |            |                        |                         |            |                          |                         |            |                |                         |            |
| 5   | 301650       | Deir Jarir             | Ramallah    | 4651            |                | 1                       | 1          |                        |                         |            |                          |                         |            |                |                         |            |
| 6   | 301685       | At Tayba               | Ramallah    | 2298            | 1              | 1                       | 1          | 1                      | 1                       | 1          |                          |                         |            |                |                         |            |
| 7   | 401900       | Qalandiya Camp         | Jerusalem   | 9798            |                |                         |            |                        |                         |            |                          |                         |            | 1              | 1                       |            |
| 8   | 452325       | Nahhalin               | Betlehem    | 6928            |                |                         | 1          |                        |                         |            |                          |                         |            |                |                         |            |
| 9   | 502435       | Khirbet ad Deir        | Hebron      | 323             | 1              | 1                       | 1          |                        |                         |            |                          |                         |            |                |                         |            |
| 10  | 502650       | Qafan al Khamis        | Hebron      | 1405            | 1              | 1                       | 1          |                        |                         |            |                          |                         |            |                |                         |            |
| 11  | 502900       | Turrama                | Hebron      | 607             |                |                         |            | 2                      |                         |            |                          |                         |            |                |                         |            |
| 12  | 502940       | Wadi ash Shajina       | Hebron      | 615             |                |                         |            | 2                      |                         |            |                          |                         |            |                |                         |            |
| 13  | 502970       | Deir al 'Asal al Fauqa | Hebron      | 1999            | 1              | 1                       | 1          |                        |                         |            |                          |                         |            |                |                         |            |
| 14  | 503235       | Somara                 | Hebron      | 150             | 1              | 1                       | 1          |                        |                         |            |                          |                         |            |                |                         |            |
| 15  | 503375       | Khirbet Zanuta         | Hebron      | 80              | 1              |                         |            |                        |                         |            |                          |                         |            |                |                         |            |